

Getting Started



What Is in This Box:

VidyoRoom HD-220

VidyoRoom HD-220 Accessory Kit:

- VidyoRoom Remote Control
- Batteries, AAA (2)
- Vertical Stand (1)
- Cord, Power, US, 6ft [1.82m] (1)
- Cord, Power, UK, 6ft [1.82m] (1)
- Cord, Power, Europe, 6ft [1.82m] (1)
- Cable, Ethernet, 6ft [1.82m] (1)
- Cable, HDMI/DVI, 6ft [1.82m] (2)
- Adapter, Display Port/DVI (2)
- HD-220 Getting Started Guide
- Cable, USB/Serial DB9, 6ft [1.82m] (1)
For use with VISCA cable
- Cable, VISCA Serial, 6ft [1.82m] (1)
VISCA Cable provides PTZ Control

Optional Purchase Components:

Camera:

- Sony EVI-HD7V (Preferred)
- Sony EVI-HD3V
- Panasonic AW-HE50N
- Minrray VHD-A910

SpeakerPhone Options:

- ClearOne Chat 150
- Konftel 300 Conference package

External Infrared Receiver Kit:

- External IR USB Adapter (1)
- Cable, USB A/B, 6ft [1.82m] (1)

Screen Share Adapter Kit:

- Vidyo VGA2USB Capture Unit (1)
- Cable, USB A/miniA, 6ft [1.82m] (1)

Overview of the VidyoRoom Remote Control

The VidyoRoom comes with a remote control allowing quick key shortcuts to frequent VidyoRoom activities. It also provides the input mode/keyboard for typing information.

Not In Conference

Use the arrow keys to navigate on-screen. The option you navigate to will be highlighted in green when activated. Press the OK key on the remote to select the option on-screen.

VOLUME / MUTE / SELFVIEW / ZOOM

Volume — Not applicable
Mute — Not applicable
Selfview —

Dual Screen Mode — shows help screen on the first monitor and turns control to the camera while preview is shown on the second monitor
Zoom — acts as a page up/page down for scrolling through search results on-screen

ALPHA-NUMERIC KEYPAD

Use these keys in conjunction with the input modes on-screen to key in user names, passwords, speed dials, and search terms.

CONTROL KEYPAD

Back — takes you to the previous screen in the VidyoRoom interface
Manage — brings up the remote control Help screen in the VidyoRoom interface
Delete — acts as a backspace when typing in a form field
Settings — brings up the Settings screen
Toggle — there is no functionality for this key

- D — multifunction key
- C — multifunction key
- B — multifunction key
- A — multifunction key

In Conference

DISCONNECT

Ends meeting

ARROWS / OK

Up/Down — pans camera (if supported by camera)
Left/Right — tilts camera (if supported by camera)

VOLUME / MUTE / SELFVIEW / ZOOM

Volume — adjusts the sound level
Mute — mutes your microphone or recording source
Selfview — cycles through Selfview modes
Single Screen Mode — picture-in-picture, docked, full screen and off

Dual Screen Mode — picture-in-picture, docked and off
Zoom — zooms your camera In/Out (if supported by camera)

ALPHA-NUMERIC KEYPAD

1-8 — sets the number of participants viewed
0 — sets the number of participants back to auto

CONTROL KEYPAD

Manage — brings up the remote control Help screen
Home — resets Camera Pan, Tilt, and Zoom to default position (if supported by camera)
Privacy — toggles Privacy mode, so that no one in the conference can see your video
Share — toggles sharing on and off when using VGA/USB device. Press the "*" button to view shared applications in full screen.
Toggle — cycles through shared sources, including none

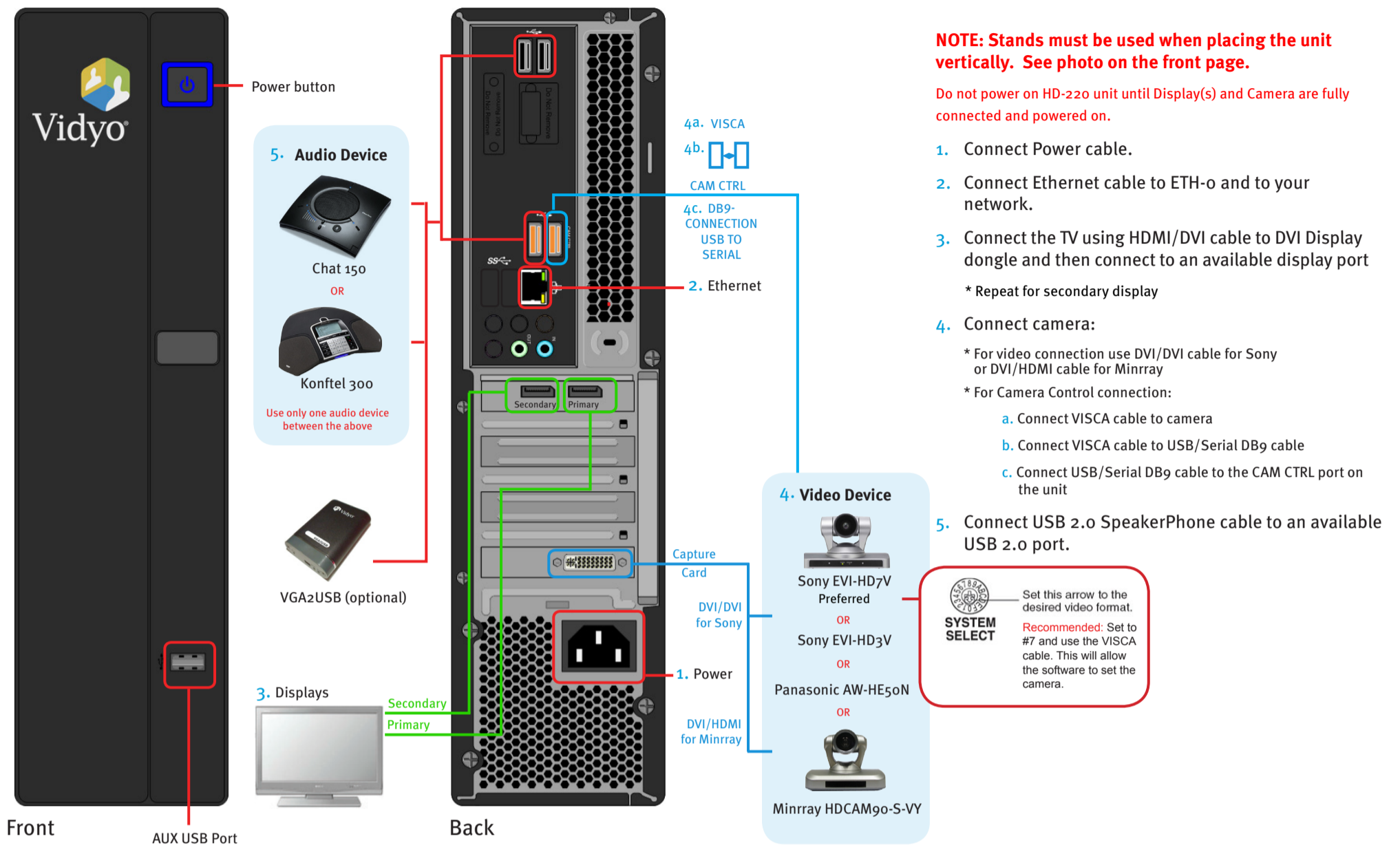
A — swaps displays when using Dual Screen mode

[HD-200 and HD-220 Only]

B — Enables DTMF dialing mode [P2P calls only]

C — Toggles Far End Camera Control mode
D — toggles between preferred/non-preferred mode

The VidyoRoom Hardware



Start Up Screens*

Upon bootup you see the *Accounts* settings screen:

1.

Portal: 192.168.1.100
 User Name: vr50
 Password: *****

Save Cancel

- Enter Portal – Arrow right, click **OK** and use the onscreen keyboard to enter the IP address of the VidyoPortal that the VidyoRoom is connected to.
- Enter Name – Arrow down to the *Name* field, click **OK** and use the onscreen keyboard to enter the name of the VidyoPortal.
- Enter Password – Arrow down to the *Password* field, click **OK** and use the onscreen keyboard to enter the password of the VidyoPortal.
- Scroll down to the *Save* button and press **OK** to save your settings

2.

Use DHCP
 Use static IP address

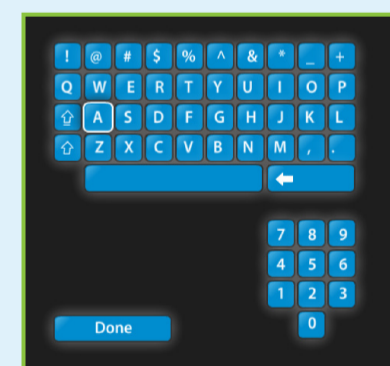
IP Address: 162.198.1.100
 Subnet Mask: 255.255.255.0
 Default Gateway: 162.198.1.50
 Primary DNS Server: 208.67.222.222

UDP Port Range:
 UDP Start: 50000
 UDP End: 65535

Save Cancel

- To change network settings for your VidyoRoom, arrow down to *Network*. The default setting is *Use DHCP*.
- Set to *Use static IP address* and specify network settings, using the onscreen keyboard to enter appropriate information, then scroll down and press **OK** on the *Save* button.

Using the Onscreen Keyboard



- In a field, click **OK** to view the keyboard.
- Use up and down, left and right arrow keys to navigate.
- Click **OK** to enter a character.
- Select *Done* to close the onscreen keyboard

* See the separate VidyoRoom Administrator and User Guide for more details.