

Getting Started

Overview of the VidyoRoom Remote Control

The VidyoRoom comes with a remote control allowing quick key shortcuts to frequent VidyoRoom activities. It also provides the input mode/keyboard for typing information.

Not In Conference

CONNECT — Start meeting from the homepage.

ARROWS / OK — Use the arrow keys to navigate on-screen. The option you navigate to will be highlighted in green when activated. Press the OK key on the remote to select the option on-screen.

VOLUME / MUTE / SELFVIEW / ZOOM — Volume — Not applicable
Mute — Not applicable
Selfview — Shows help screen on the first monitor and turns control to the camera while preview is shown on the second monitor
Zoom — acts as a page up/page down for scrolling through search results on-screen

ALPHA-NUMERIC KEYPAD — Use these keys in conjunction with the input modes on-screen to key in user names, passwords, speed dials, and search terms.

CONTROL KEYPAD

Back — takes you to the previous screen in the VidyoRoom interface

Manage — brings up the remote control Help screen in the VidyoRoom interface

Home — takes users to the home screen in the VidyoRoom interface

Delete — acts as a backspace when typing in a form field

Settings — brings up the Settings screen

Toggle — there is no functionality for this key

A — multifunction key

B — multifunction key

C — multifunction key

D — multifunction key



In Conference

In Conference

DISCONNECT — Ends meeting

ARROWS / OK — Left/Right — pans camera (if supported by camera)
Up/Down — tilts camera (if supported by camera)

VOLUME / MUTE / SELFVIEW / ZOOM — Volume — adjusts the sound level
Mute — mutes your microphone or recording source
Selfview — cycles through Selfview modes
Single Screen Mode — picture-in-picture, docked, full screen and off
Dual Screen Mode — picture-in-picture, docked and off

ALPHA-NUMERIC KEYPAD — 1-8 — sets the number of participants viewed
0 — sets the number of participants back to auto

CONTROL KEYPAD

Manage — brings up the remote control Help screen

Home — resets Camera Pan, Tilt, and Zoom to default position (if supported by camera)

Privacy — toggles Privacy mode, so that no one in the conference can see your video

Share — toggles sharing on and off when using VGA/USB device. Press the "*" button to view shared applications in full screen.

Toggle — cycles through shared sources, including none

A — swaps displays when using Dual Screen mode

B — Enables DTMF dialing mode [P2P calls only]

C — Toggles Far End Camera Control mode

D — toggles between preferred/non-preferred mode

What Is in This Box:

VidyoRoom HD-110

VidyoRoom HD-110 Accessory Kit:

- VidyoRoom Remote Control
- Batteries, AAA (2)
- Vertical Stand (1)
- Cord, Power, US, 6ft [1.82m] (1)
- Cord, Power, UK, 6ft [1.82m] (1)
- Cord, Power, Europe, 6ft [1.82m] (1)
- Cable, Ethernet, 6ft [1.82m] (1)
- Cable, HDMI/DVI, 6ft [1.82m] (2)
- Adapter, Display Port/DVI (2)
- HD-110 Getting Started Guide
- Cable, USB/Serial DB9, 6ft [1.82m] (1)
For use with VISCA cable
- Cable, VISCA Serial, 6ft [1.82m] (1)
VISCA Cable provides PTZ Control
- See the VidyoRoom Administrator and User Guide for installation instructions*

Optional Purchase Components:

Camera

- Sony EVI-HD7V
- Sony EVI-HD3V
- Minrray VHD-A910

SpeakerPhone Options:

- ClearOne Chat 150
- Konftel 300 Conference package

External Infrared Receiver Kit:

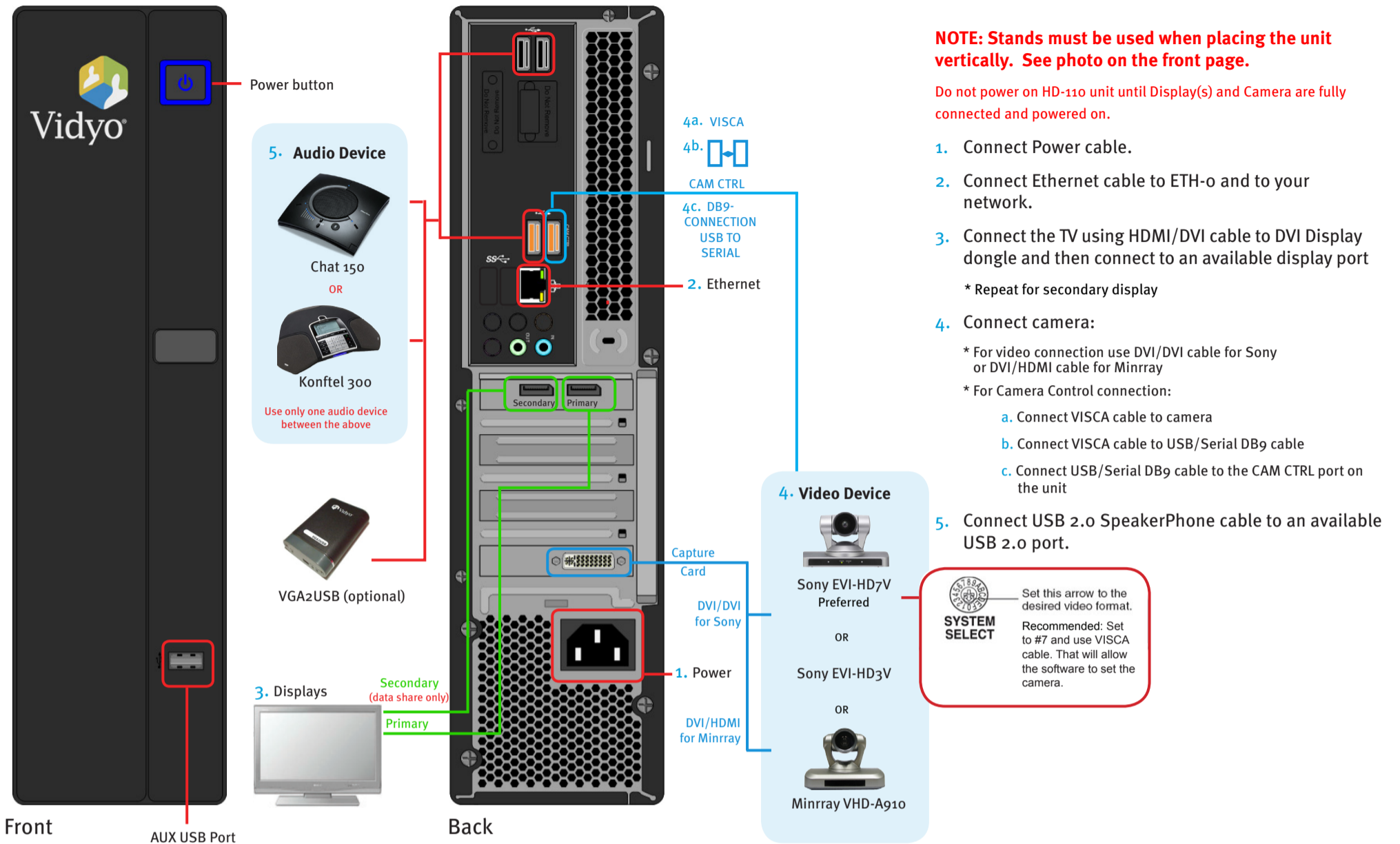
- External IR USB Adapter (1)
- Cable, USB A/B, 6ft [1.82m] (1)

Screen Share Adapter Kit:

- Vidyo VGA2USB Capture Unit (1)
- Cable, USB A/miniA, 6ft [1.82m] (1)



The VidyoRoom Hardware



Start Up Screens*

Upon bootup you see the *Accounts* settings screen:

1.

Portal: 192.168.1.100
 User Name: vr50
 Password: *****
 Save Cancel

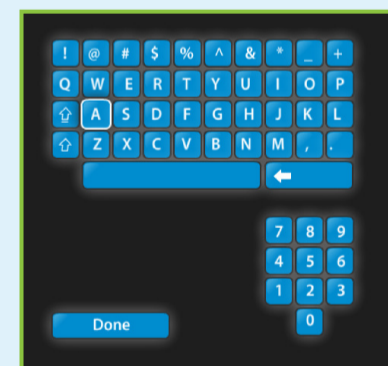
- Enter Portal – Arrow right, click **OK** and use the onscreen keyboard to enter the IP address of the VidyoPortal that the VidyoRoom is connected to.
- Enter Name – Arrow down to the *Name* field, click **OK** and use the onscreen keyboard to enter the name of the VidyoPortal.
- Enter Password – Arrow down to the *Password* field, click **OK** and use the onscreen keyboard to enter the password of the VidyoPortal.
- Scroll down to the *Save* button and press **OK** to save your settings

2.

Use DHCP (selected) / Use static IP address
 IP Address: 162.198.1.100
 Subnet Mask: 255.255.255.0
 Default Gateway: 162.198.1.50
 Primary DNS Server: 208.67.222.222
 UDP Port Range:
 UDP Start: 50000
 UDP End: 65535
 Save Cancel

- To change network settings for your VidyoRoom, arrow down to *Network*. The default setting is *Use DHCP*.
- Set to *Use static IP address* and specify network settings, using the onscreen keyboard to enter appropriate information, then scroll down and press **OK** on the *Save* button.

Using the Onscreen Keyboard



- In a field, click **OK** to view the keyboard.
- Use up and down, left and right arrow keys to navigate.
- Click **OK** to enter a character.
- Select *Done* to close the onscreen keyboard

* See the separate VidyoRoom Administrator and User Guide for more details.